



HUMIDITY



TEMPERATURE



FLOW



CONDUCTIVITY

# HYT LCD Module

## LCD Module

### For evaluation and demonstration of the HYT modules

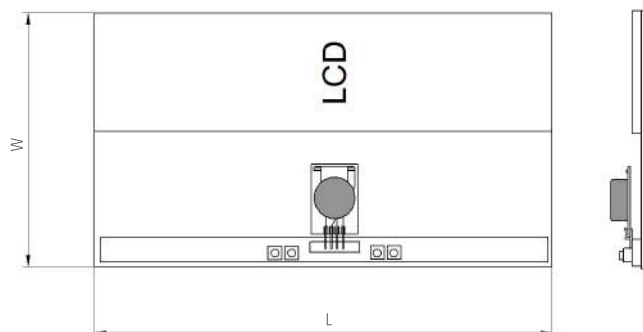


INNOVATIVE SENSOR TECHNOLOGY

#### Benefits & Characteristics

- Easy usage
- Automatic address determination of connected sensor
- I<sup>2</sup>C address change possible
- External or internal power supply
- Automatic switchover (internal / external)
- Correction of humidity and temperature measurement values
- Permanent storage of the correction values

#### Illustration<sup>1)</sup>



1) For actual size, see dimensions

#### Technical Data

Dimensions (L x W x in mm):	70 x 40
Humidity output signal:	0 V to 10 V (0 % RH to 100 % RH)
Temperature output signal:	0 V to 10 V (-40 °C to +125 °C)
Sampling time:	1 s
Supply voltage:	3 V by internal CR2032 (battery not included) or 5 V by external supply, reverse polarity protected, automatic switchover
Current consumption:	< 4 mA
Supported sensor:	HYT 271 or HYT 221
Digital interface:	I <sup>2</sup> C
Display:	LC-display with 2x8 characters
Maximum output load:	10 mA

#### Order Information<sup>1)</sup>

Order code	IST_HYT_LCDmodul 600.00054
------------	-------------------------------

1) The LCD-Module does not contain any sensors. The sensors must be ordered separately.



HUMIDITY



TEMPERATURE



FLOW



CONDUCTIVITY

# HYT LCD Module

## LCD Module

For evaluation and demonstration of the HYT modules



INNOVATIVE SENSOR TECHNOLOGY

### Additional Documents

	Document name:
Datasheet:	DHHYT271_E
Datasheet:	DHHYT221_E
Datasheet:	DHHYT939_E
Application note:	AHHYTM_E



INNOVATIVE SENSOR TECHNOLOGY



Innovative Sensor Technology IST AG, Stegrütistrasse 14, CH-9642 Ebnat-Kappel, Switzerland,  
Phone: +41 (0) 71 992 01 00 | Fax: +41 (0) 71 992 01 99 | E-mail: [info@ist-ag.com](mailto:info@ist-ag.com) | Web: [www.ist-ag.com](http://www.ist-ag.com)

All mechanical dimensions are valid at 25 °C ambient temperature, if not differently indicated • All data except the mechanical dimensions only have information purposes and are not to be understood as assured characteristics • Technical changes without previous announcement as well as mistakes reserved • The information on this data sheet was examined carefully and will be accepted as correct; No liability in case of mistakes • Load with extreme values during a longer period can affect the reliability • The material contained herein may not be reproduced, adapted, merged, translated, stored, or used without the prior written consent of the copyright owner • Typing errors and mistakes reserved • Product specifications are subject to change without notice • All rights reserved



HUMIDITY



TEMPERATURE



FLOW



CONDUCTIVITY

# Application Note

## Humidity Module



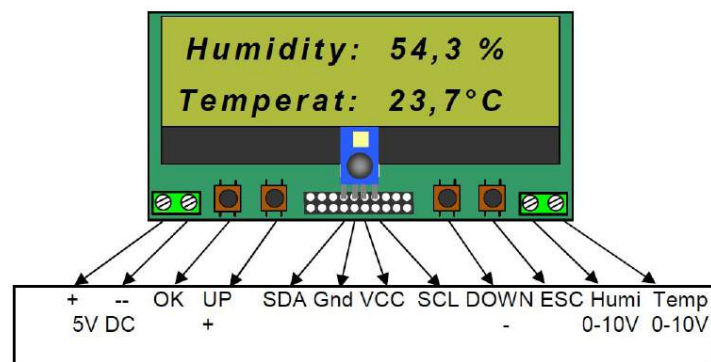
INNOVATIVE SENSOR TECHNOLOGY

### LCD Module for HYT 271

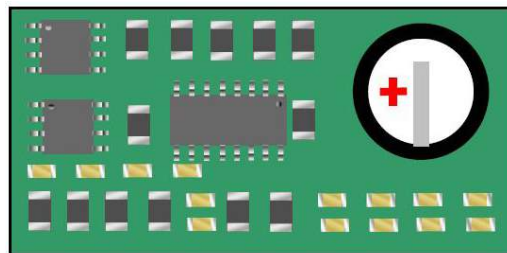
The Hygrochip LCD module is an easy to use demonstration and evaluation kit for HYT sensors. The measured values of the connected sensor can be displayed on the display. If an external power supply is used the measured values are also available on the analog outputs.

#### 1 Pin Designation

Top



Bottom





HUMIDITY



TEMPERATURE



FLOW



CONDUCTIVITY

# Application Note

## Humidity Module



INNOVATIVE SENSOR TECHNOLOGY

### 2 Description of Operation

After power on, the module shows the following information for 2 seconds:

HYT 271 – Module

www.ist – ag.com

After that it changes to the measurement mode and shows the values of relative humidity and temperature.

Humidity 54,3 %

Temperat 23,7 °C

The following configuration options are available in addition to the measured values:

1. CONFIGURATION  
Address 0xHH (0x00 – 0x7F)
2. CONFIGURATION  
Corr-Temp. 0.0K (-1,0K – 1,0K)
3. CONFIGURATION  
Corr-Humid 0.0% (-1,0% - 1,0%)

Switching between the standard and configuration menus is possible by use of the UP and DOWN buttons.

By pressing the OK button into a configuration menu the software goes into the input mode. This mode is shown by the cursor and blinking of the last character. In the input mode the function of UP / DOWN will be changed to +/- . The value can be changed into the limits by pressing the +/- buttons.

The new value is stored by pressing the OK button.

By pressing the ESC button the entered value is rejected and the software leaves the input mode.



INNOVATIVE SENSOR TECHNOLOGY



Innovative Sensor Technology IST AG, Stegrütistrasse 14, CH-9642 Ebnet-Kappel, Switzerland,  
Phone: +41 (0) 71 992 01 00 | Fax: +41 (0) 71 992 01 99 | E-mail: info@ist-ag.com | Web: www.ist-ag.com

All mechanical dimensions are valid at 25 °C ambient temperature, if not differently indicated • All data except the mechanical dimensions only have information purposes and are not to be understood as assured characteristics • Technical changes without previous announcement as well as mistakes reserved • The information on this data sheet was examined carefully and will be accepted as correct; No liability in case of mistakes • Load with extreme values during a longer period can affect the reliability • The material contained herein may not be reproduced, adapted, merged, translated, stored, or used without the prior written consent of the copyright owner • Typing errors and mistakes reserved • Product specifications are subject to change without notice • All rights reserved

AHHYTM\_E2.2